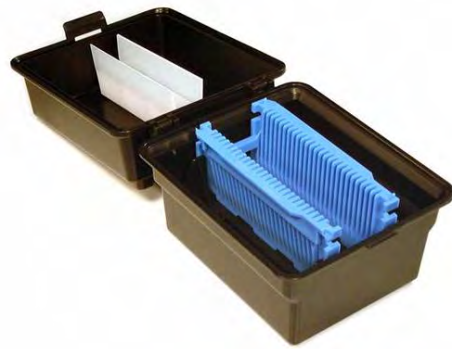




# 2", 3" & 4" PROCESS BOATS & BOXES

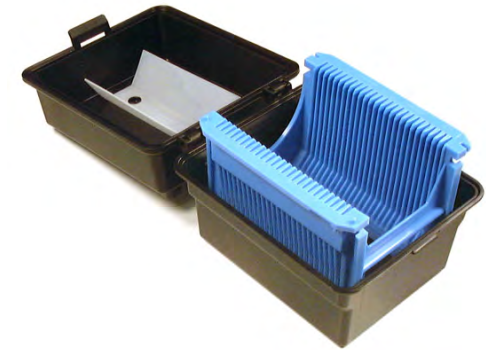
(For Process Boat ordering information, see product details on Page 20)



ePB-2/50-25-x-y  
inside  
ePBX-2-ASSY-#



ePB-3/76-25-x-y  
inside  
ePBX-3-ASSY-#



inside  
ePBX-4-ASSY-#

## 2", 3" & 4" Storage Box Product info

Wafer Size	ePAK Description	ePAK Order code	Notes
2"	ePBX-2-ASSY-#	eWB0095-ASSY-#	Requires shelf to hold cassette, cushion available
3"	ePBX-3-ASSY-#	eWB0123-ASSY-#	Optional shelf for R.2, R.3 and R.6 cassettes, cushion available
3"	ePBX-3-R.1-ASSY-#	eWB0260-ASSY-#	Low height lid, no cushion available
3"	ePBX-3-R.2-ASSY-#	eWB0433-ASSY-#	Small body box, cushion available
4"	ePBX-4-ASSY-#	eWB0124-ASSY-#	Cushion available
4" (2 cassettes)	ePBX-5/125-2-ASSY-#	eWB0097-ASSY-#	5" x 2 cassette box with special shelf holds 2 x 4" cassettes

## Material code info:

Material	Code	SR
Conductive Polypropylene (Black only)	eM-01-BLK	10e4-10e5
Polypropylene (Multiple Color Options →)	eM-08-(color code)	n/a

## Color code info

BLU = Blue  
GRN = Green  
RED = Red  
YLW = Yellow

[RETURN TO TABLE OF CONTENTS](#)



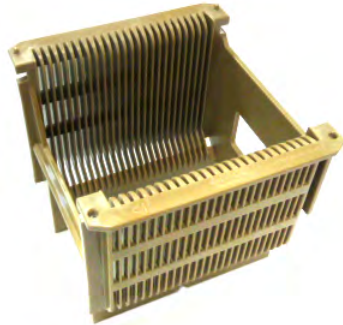


# 5" PROCESS BOATS & BOXES

(For ordering information, see product details on Pages 20-23)



ePB-5/125-25-x-y



ePB-5/125-25-R.1-eM-61-BRW



ePB-5/125-25-R.2-x-y



ePB-5/125-25-R.4-eM-47-BLK



ePB-5/125-25-R.5-x-y



ePBX-5/125-ASSY-#



ePBX-5/125-R.1-ASSY-#



ePBX-5/125-2-ASSY-#



[RETURN TO TABLE OF CONTENTS](#)

# 6" PROCESS BOATS & BOXES

(For ordering information, see product details on Pages 21-23)



ePB-6/150-25-x-y



ePB-6/150-25-R.1-x-y



ePB-6/150-25-R.2-eM-47-BLK



ePB-6/150-25-R.4-eM-56



ePB-6/150-25-R.6-x-y



ePB-6/150-25-R.9-x-y



ePB-6/150-12-x-y



ePB-6/150-15-x-y



ePB-6/150-18-x-y



ePB-6/150-18-R.1-eM-47-BLK



ePBX-6/150-ASSY-#



ePBX-6/150-R.1-ASSY-#



ePBX-6/150-R.3-ASSY-#



ePBX-6/150-R.5-ASSY-#



ePBX-6/150-R.10-ASSY-#



ePBX-6/150-2-ASSY-#



[RETURN TO TABLE OF CONTENTS](#)

# 8" PROCESS BOATS & BOXES

(For ordering information, see product details on Pages 22 - 23)



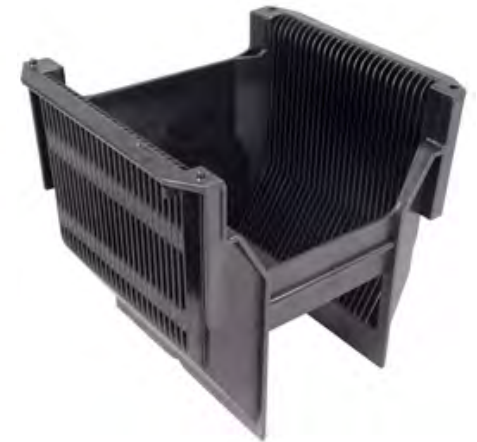
ePB-8/200-25-eM-45-BLK



ePB-8/200-25-R.2-x-y



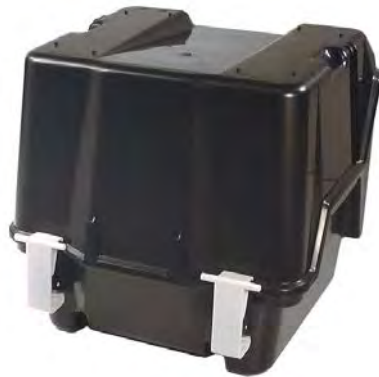
ePB-8/200-13-x-y



ePB-8/200-25-R.9-eM-47



ePBX-8/200-ASSY-#



ePBX-8/200-R.1-ASSY-#



ePBX-8/200-R.3-ASSY-#



ePBX-8/200-R.6-ASSY-#



[RETURN TO TABLE OF CONTENTS](#)



# PROCESS BOATS

Wafer Size	ePAK P/N Description	ePAK Order Code	Materials available	Notes	Internal Diameter	Slots
2"	ePB-2/50-25-x-y	eWB0031-x-y	eM-01-BLK, eM-08-y, eM-56-NAT	-	50 mm	25
2"	ePB-2/50-25-R.1-eM-39-NAT	eWB0316-eM-39-NAT	eM-39-NAT	-	50 mm	25
2.5"	ePB-2.5/63.5-25-eM-39-NAT	eWB0405-eM-39-NAT	eM-39-NAT	-	63.5mm	25
3"	ePB-3/76-25-x-y	eWB0032-x-y	eM-01-BLK, eM-08-y, eM-56-NAT	-	76 mm	25
3"	ePB-3/76-25-R.2-x-y	eWB0092-x-y	eM-01-BLK, eM-08-y, eM-56-NAT	-	76 mm	25
3"	ePB-3/76-25-R.3-x-y	eWB0096-x-y	eM-01-BLK, eM-08-y, eM-56-NAT	-	76 mm	25
3"	ePB-3/76-25-R.4-x-y	eWB0276-x-y	eM-01-BLK, eM-08-y, eM-56-NAT	-	76 mm	25
3"	ePB-3/76-25-R.5-eM-56	eWB0280-eM-56-NAT	eM-56-NAT	(note: 3" boat in a 5" Outline)	76 mm	25
3"	ePB-3/76-25-R.6-eM-39-NAT	eWB0306-eM-39-NAT	eM-39-NAT	-	76 mm	25
4"	ePB-4/100-25-x-y	eWB0049-x-y	eM-01-BLK, eM-08-y, eM-56-NAT	-	100 mm	25
4"	ePB-4/100-25-R.2-x-y	eWB0125-eM-56-NAT	eM-56-NAT	(note: 4" boat in a 5" Outline)	100 mm	25
4"	ePB-4/100-25-R.6-x-y	eWB0277-x-y	eM-01-BLK, eM-08-y, eM-56-NAT	-	100 mm	25
4"	ePB-4/100-25-R.8-x-y	eWB0308-x-y	eM-01-BLK, eM-08-y, eM-56-NAT	-	100 mm	25
4"	ePB-4/100-25-R.9-eM-39-NAT	eWB0309-eM-39-NAT	eM-39-NAT	"-W" Window Option available	100 mm	25
5"	ePB-5/125-25-x-y	eWB0088-x-y	eM-01-BLK, eM-08-y, eM-56-NAT	Window is Standard	125 mm	25
5"	ePB-5/125-25-R.1-eM-61-BRW	eWB098-eM-61-BRW	eM-61-BRW	"-N-" Notch Option available	125 mm	25
5"	ePB-5/125-25-R.2-x-y	eWB0114-x-y	eM-01-BLK, eM-08-y, eM-56-NAT	-	125 mm	25
5"	ePB-5/125-25-R.4-eM-47-BLK	eWB00229-eM-47-BLK	eM-47-BLK	"-N-" Notch Option available	125 mm	25
5"	ePB-5/125-25-R.5-x-y	eWB00300-x-y	eM-01-BLK, eM-08-y, eM-56-NAT	-	125 mm	25

## Material code info ("x" in P/N):

Material	Code	SR
Conductive Polypropylene (Black color only)	eM-01-BLK	10e4-10e5
Polypropylene (Multiple Color Options →)	eM-08-y	n/a
PFA (No color option)	eM-39-NAT	n/a
PP+PTFE+ CF (Dark Grey color only)	eM-45-BLK	10e4-10e10
PEEK + CF (No color option)	eM-47-BLK	≤10e9
Polyvinylidene Difluoride (PVDF, Natural color only)	eM-56-NAT	n/a

## Color code info (-y in P/N)

NAT = Natural(no color added)  
 BLU = Blue  
 GRN = Green  
 RED = Red  
 YLW = Yellow

[RETURN TO TABLE OF CONTENTS](#)



# PROCESS BOATS (continued)

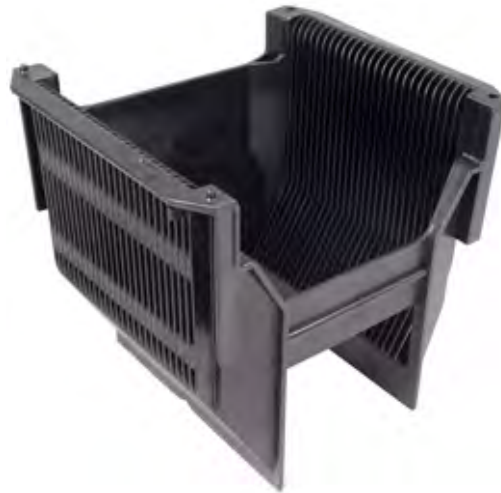
## 6" Process Boats:

Wafer Size	ePAK P/N Description	ePAK Order Code	Materials Available	Notes and/or Alternative ePAK P/N (-N) =with Notch Option (-W) =with Window Option (-H) =with Handle Option	Internal Diameter	Slots
6"	ePB-6/150-25-x-y	eWB0051-x-y	eM-01-BLK, eM-08-y, eM-56-NAT	ePB-6/150-25-N-x-y	150 mm	25
6"	ePB-6/150-25-R.1-x-y	eWB0052-x-y	eM-01-BLK, eM-08-y, eM-56-NAT	ePB-6/150-25-R.1-N-x-y	150 mm	25
6"	ePB-6/150-25-R.2-N-eM-47-BLK	eWB0101-N-eM-47-BLK	eM-47-BLK	Notch is Standard	150 mm	25
6"	ePB-6/150-25-R.4-eM-56	eWB0153-eM-56	eM-56-NAT	ePB-6/150-25-R.4-N-eM-56	150 mm	25
6"	ePB-6/150-25-R.6-x-y	eWB0188-x-y	eM-01-BLK, eM-08-y, eM-56-NAT	ePB-6/150-25-R.6-N-x-y	150 mm	25
6"	ePB-6/150-25-R.8-eM-39-NAT	eWB0304-eM-39-NAT	eM-39-NAT	ePB-6/150-25-R.8-W-eM-39-NAT	150 mm	25
6"	ePB-6/150-25-R.9-x-y	eWB0307-x-y	eM-01-BLK, eM-08-y, eM-56-NAT	ePB-6/150-25-R.9-W-x-y	150 mm	25
6"	ePB-6/150-25-R.10-eM-39-NAT	eWB0318-eM-39-NAT	eM-39-NAT	Low Profile	150 mm	25
6"	ePB-6/150-25-R.11-eM-39-NAT	eWB0327-eM-39-NAT	eM-39-NAT	n/a	150 mm	25
6"	ePB-6/150-25-R.12-eM-39-NAT	eWB0342-eM-39-NAT	eM-39-NAT	Low Profile, No H-bar	150mm	25
6"	ePB-6/150-12-x-y	eWB0135-x-y	eM-01-BLK, eM-08-y, eM-56-NAT	ePB-6/150-12-N-x-y	150 mm	12
6"	ePB-6/150-15-x-y	eWB0359-x-y	eM-01-BLK, eM-08-y	Short length cassette, standard slots	150mm	15
6"	ePB-6/150-18-x-y	eWB0416-x	eM-01-BLK, eM-08-y	ePB-6/150-18-N-x-y	150mm	18
6"	ePB-6/150-18-R.1-eM-47-BLK	eWB0417-eM-47-BLK	eM-47-BLK	ePB-6/150-18-R.1-N-eM-47-BLK	150mm	18
6"	ePB-6/150-18-R.2-eM-39-NAT	eWB0418-eM-39-NAT	eM-39-NAT	Notch & Window option available	150mm	18
6"	ePB-6/150-20-R.1-eM-39-NAT	eWB0372-eM-39-NAT	eM-39-NAT	n/a	150mm	20
159 mm	ePB-6/159-25-eM-47-BLK	eWB0207-eM-47-BLK	eM-47-BLK	ePB-6/159-25-N-eM-47-BLK	159 mm	25
159 mm	ePB-6/159-25-R.1-eM-39-NAT	eWB0208-eM-39-NAT	eM-39-NAT	ePB-6/159-25-R.1-N-eM-39-NAT	159 mm	25

### Material code info ("x" in P/N):

Material	Code	SR	Material	Code	SR
Conductive Polypropylene (Black color only)	eM-01-BLK	10e4-10e5	PP+PTFE+ CF (Dark Grey color only)	eM-45-BLK	10e4-10e10
Polypropylene ("-y" Multiple Color Options)	eM-08-y	n/a	PEEK + CF ( No color option)	eM-47-BLK	≤10e9
PFA (No color option)	eM-39-NAT	n/a	PVDF (Natural color only)	eM-56-NAT	n/a

[RETURN TO TABLE OF CONTENTS](#)



## 8" Process Boats:

Wafer Size	ePAK P/N Description	ePAK Order Code	Materials Available	Notes and/or Alternative ePAK P/N (-N) =with Notch Option (-W) =with Window Option (-H) =with Handle Option	Internal Diameter	Slots
8"	ePB-8/200-25-eM-45-BLK	eWB0045-eM-45-BLK	eM-45-BLK	n/a	200 mm	25
8"	ePB-8/200-25-R.2-x-y	eWB0090-x-y	eM-01-BLK, eM-08-y, eM-56-NAT	n/a	200 mm	25
8"	ePB-8/200-13-x	eWB0182-x-y	eM-01-BLK, eM-08-y, eM-56-NAT	n/a	200 mm	13
8"	ePB-8/200-25-R.6-eM-39-NAT	eWB0220-eM-39-NAT	eM-39-NAT	n/a	200 mm	25
8"	ePB-8/200-25-R.9-eM-47-BLK	eWB0382-eM-47-BLK	eM-47-BLK	ePB-8/200-25-R.9-H-eM-47-BLK	200 mm	25
8"	ePB-8/200-25-R.10-eM-39-NAT	eWB0385-eM-39-NAT	eM-39-NAT	Low Profile	200 mm	25

## Material code info ("x" in P/N):

Material	Code	SR	Material	Code	SR
Conductive Polypropylene (Black color only)	eM-01-BLK	10e4-10e5	PP+PTFE+ CF (Dark Grey color only)	eM-45-BLK	10e4-10e10
Polypropylene ("-y" Multiple Color Options)	eM-08-y	n/a	PEEK + CF ( No color option)	eM-47-BLK	≤10e9
PFA (No color option)	eM-39-NAT	n/a	PVDF (Natural color only)	eM-56-NAT	n/a

[RETURN TO TABLE OF CONTENTS](#)